



User's manual



Copyright Notice

Copyright 1999 by Macally Peripherals

This manual is furnished under license and may be used or copied only in accordance with the terms of such license.

Except as permitted by such license, no part of this publication may be reproduced, stored in a retrieval system, or transmitted, in any form or any means, electronic, mechanical, recording, or otherwise, including translation to another language or format, without the prior written permission of Macally Peripherals.

The content of this manual is furnished for informational use only, is subject to change without notice, and should not be construed as a commitment by Macally Peripherals. Macally Peripherals assumes no responsibility or liability for any errors or inaccuracies that may appear in this book.

Trademarks

Ethernet is a registered trademark of the Xerox Corporation. All brand names and products are trademarks or registered trademarks of their respective holders.

FCC Information

This device complies with part 15 of the FCC Rules. Operation is subject to the following two conditions: (1) this device may not cause harmful interference and (2) this device must accept any interference received, including interference that may cause undesired operation.

Operation of this equipment in a residential area is likely to cause interference in which case the user at his or her own risk and expense will be required to correct the interference.

Declaration of Conformity

Chia Shin Technology, Inc, declares that the iMousePro conforms to the following standards, in accordance with the provisions of the EC Directive 89/366/EEC: EN 55022 (CISPR 22:1985), Class A.

WARRANTY

Macally Peripherals warrants that this product will be free from defects in title, materials and manufacturing workmanship for three (3) years from the date of the purchase. If the product is found to be defective then, as your sole remedy and as the manufacturer's only obligation, Macally will repair or replace the product.

This warranty is exclusive and is limited to iMousePro. This warranty shall not apply to products that have been subjected to abuse, misuse, abnormal electrical or environmental conditions, or any condition other than what can be considered normal use.

Warranty Disclaimers

Macally Peripherals makes no other warranties, express, implied or otherwise, regarding the iMousePro, and specifically disclaims any warranty for merchantability or fitness for a particular purpose.

The exclusion of implied warranties is not permitted in some states and the exclusions specified herein may not apply to you. This warranty provides you with specific legal rights. There may be other rights that you have which vary from state to state.

Limitation of Liability

The liability of Macally Peripherals arising from this warranty and sale shall be limited to a refund of the purchase price. In no event shall Macally Peripherals be liable for costs of procurement of substitute products or services, or for any lost profits, or for any consequential, incidental, direct or indirect damages, however caused and on any theory of liability, arising from this warranty and sale. These limitations shall apply notwithstanding any failure of essential purpose of any limited remedy.

Headquarters

Chia Shin Technology Corp
8-1F, No.159, Sung Teh Rd.,
Taipei, Taiwan, R.O.C.

Tel: 886. 2. 726.3859
Fax: 886. 2. 727.0804
macally@macally.com.tw

U.S. Branch office

Mace Group Inc.
5101 Commerce Dr.
Baldwin Park, CA 91706

Tel: 626. 338.8787
Fax: 626. 338.3585
macally@macally.com

Europe Branch office

Teklink Europe B.V.
Bedrijfsweg 10, 6541
DC Nijmegen, The Netherlands

Tel:31. 24.3731410
Fax:31. 24.3731134
e-mail: maxl@macally.com

CONTENTS

INTRODUCING MACALLY IMOUSEPRO	5
About This Guide	5
System Requirements	5
Registration	5
About Macally Products and Services	6
Package Contents	6
Macally iMousepro Software Driver Installation	6
HARDWARE BASICS	8
SOFTWARE BASICS	9
Device Selection	9
Button Settings	9
Single Click	10
Double Click	10
Click Lock	11
Spring Folder	11
Keystroke	11
Modifier	12
Configuring For Applications	12
Examples	14
FREQUENTLY ASKED QUESTIONS	15
REGISTRATION CARD	16

INTRODUCING THE MACALLY IMOUSEPRO

Thank you for purchasing the Macally iMousePro - The Macally iMousePro's programmable features are designed to enhance and simplify all your mouse functions.

ABOUT THIS GUIDE

Before you begin using the Macally iMousePro, be sure to read this manual in its entirety.

This guide contains:

- Installation instructions for the Macally USB Manager driver.
- A summary of features.
- Step by step programming.
- Frequently asked questions.

SYSTEM REQUIREMENTS

- imac or G3 models with a built-in USB port or any PCI based PowerPC with a 3rd party PCI to USB adapter installed.
- Apple System software 8.5.1 or later.
(Some systems may require a USB update from Apple).
- 600K of free disk space.

REGISTRATION

We are confident that the Macally iMousePro will greatly increase your productivity and simplify the usage of your computer. Therefore, to provide you with the latest driver updates, offer technical support and keep you informed of new Macally products, please take time to fill in the enclosed warranty registration card and return it to us.

ABOUT MACALLY PRODUCTS AND SERVICES

More information about Macally products and services is available through the following sources:

- The Macally Home Page on the World Wide Web URL
<http://www.macally.com> or <http://www.macally-europe.com>
- Macally Technical Support:
In U.S.A, please call 1-800-644-1132 or
in other areas, E-mail us at **techsupport@macally.com** or
techsupport@macally-europe.com

PACKAGE CONTENTS

The Macally iMousePro package includes the following software and documentation:

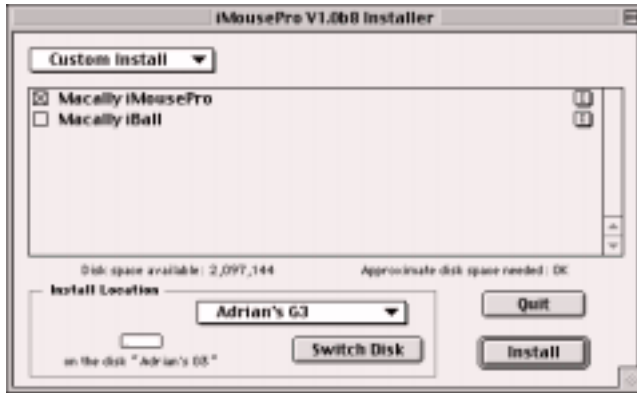
- The software disks containing the installer software program and manual, and registration card.
- iMousepro

DRIVER INSTALLATION

Use the following procedure to install the iMousepro Software Driver. You must install the program onto your hard disk; you cannot run the Macally USB Manager from the CD. The installation disk is compatible with all Macintosh computers.

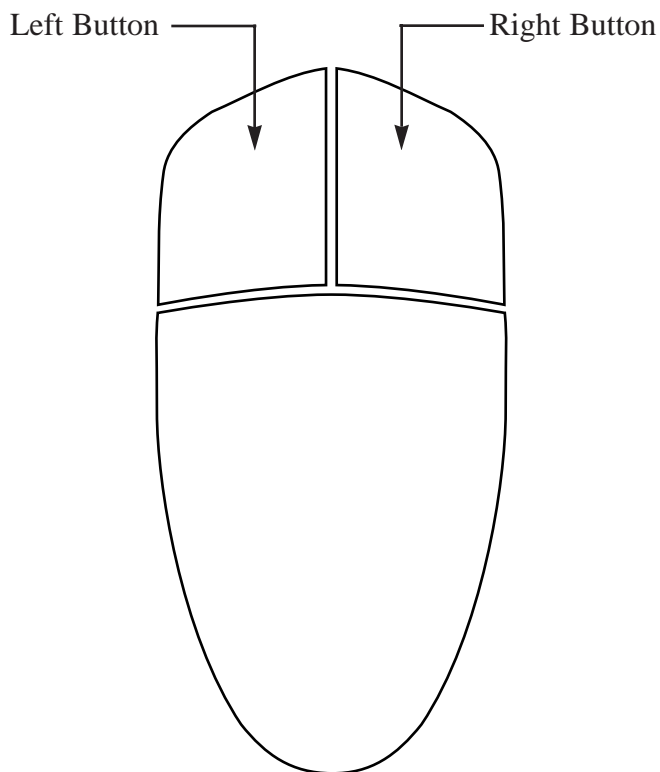
To install the Macally USB Manager:

- 1 Plug the iMousePro to any available USB port.
- 2 Insert the installation disk.
- 3 Double-click the "Macally USB Manager Installer" icon. The installation window appears.



- 4 Select " iMousePro" and click "Install"
- 5 When the installation process is complete, a message appears indicating that the installation was successful.
- 6 Click "Restart".

HARDWARE BASICS



Left Button

Set as single click button (factory default).

Right Button

Set as control button and mouse click (factory default).

SOFTWARE BASICS

Open the Macally USB Manager from the Control Panel inside the Apple Menu window, Figure 1 will be displayed on your desktop.

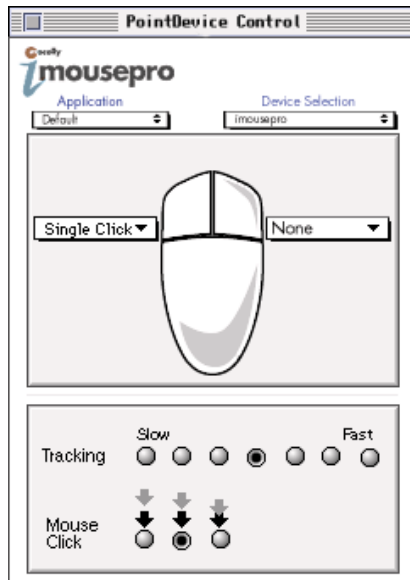


Figure 1

DEVICE SELECTION

The Macally USB Manager will automatically detect which device is connected to the computer. In this case, "iMousePro" is displayed.

BUTTON SETTING PULL DOWN MENUS

- 1 Click one of button pull down menus illustrated in figure1. The window shown in figure2 will open.

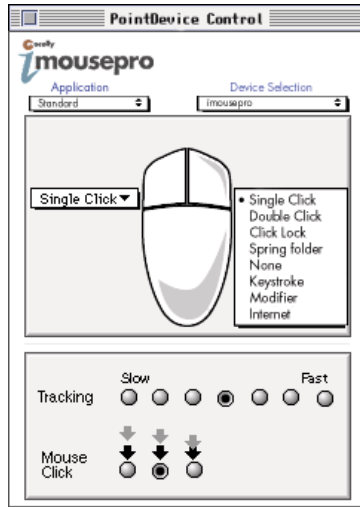


Figure 2

- 2 Select from one of the defined settings in this window for the button you want to program (Figure shows the right buttons configuration).

Single Click

"Single Click" is the Macintosh default mouse click function. One of the mouse buttons must always be set to this function.

Double Click

This selection will cause a single mouse click to act like a double click. Opening a folder or application with a single click will ease the muscle tension built up from double clicking the mouse all day long.

Click Lock

This mode functions like a click and with no release action on the button. For example, when you click the Apple menu bar with this button, the window will stay down, or if you click a folder, the folder will "stick" to your mouse cursor until you click the button one more time. This function is provided for System 7.x.x users.

Spring Folder

This will function as one full click and hold. Simply place the mouse cursor on top of a folder and click the button. Please refer to MacOS8.5 manual how to use this option.

None

Select this mode to disable the button function.

Keystroke

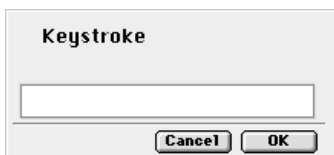






Figure 3

To use the keystroke mode, simply type the desired keys on your keyboard while the keystroke window is open. The corresponding key(s) will be displayed inside the keystroke bar. To change the key settings, just retype the keystrokes (Delete again). The allowable key combinations are a maximum of four modifier* keys and one alpha or numeric key.

Note: The default setting for the left button is "Single Click" and the right button is "Double Click". You must always set at least one button to "Single click" at all times. Therefore, before changing the setting of the left button to other than "single click", you need to change the right button's setting to "Single Click". A warning message will be displayed if the above conditions are not followed.

* Modifier keys are:

*Control () , Command () , Shift () , and Option () keys.

Modifier

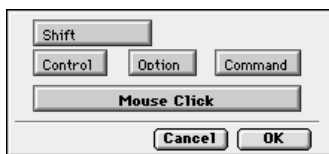


Figure 4

This mode is designed specifically for MacOS 8 or windows compatible software and add-on cards. Simply select one or more combinations from the screen.

CONFIGURING FOR APPLICATIONS

The Macally iMousePro has an Auto Application Setting Recognition feature. This will automatically default to the last preprogrammed button setting that corresponds to the launched application. When multiple applications are open, the driver will always match the active application with the corresponding setting.

Note: The default and Finder setting for the Left button is single click and the right button is Double click.

Add Application Settings

To add a new application setting, select "New" from the Application pop up window (See figure 10), the window shown in Figure 11 will open.

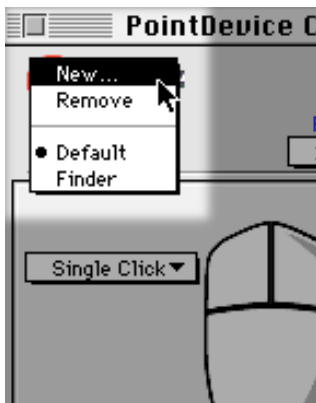


Figure 10

Please select the application file that you want to configure. (For example: Adobe Photoshop or Microsoft Excel). Click "Open".

Please select the application file that you want to configure. (For example: Adobe Photoshop or Microsoft Excel). Click "Open".

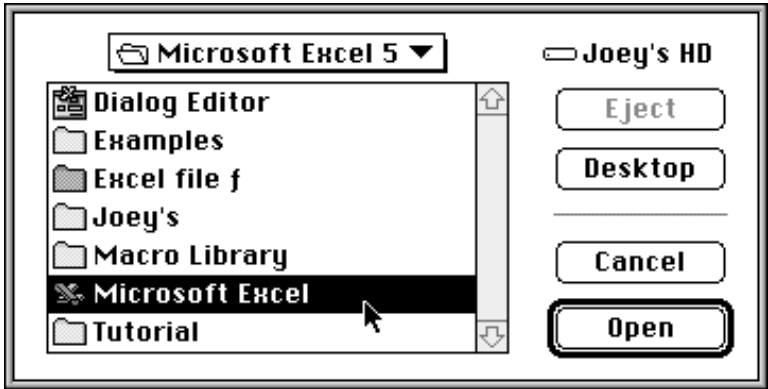


Figure 11

The selected application should show up on the Application pop-up window. From the button pop-up window, select the appropriate setting for the application, click OK and close the window. Launch the application, the corresponding button setting will automatically load and be ready for use.



Figure 12

EXAMPLES:

System MacOS 8.5

1. Go to the "Application" Pop-up menu and select Finder.
2. From the "Button Setting" pull down menus, select "Modifier".
3. From the bottom of Macally USB Manager control menu, click the "Control" and "Mouse click" buttons.
4. Click "OK" and close the window.

Note: This function has been set as the default setting.

Soft Windows

1. Go to the "Application" Pop-up menu and select "New".
2. Look for the Soft Windows folder and select the Soft Windows file. Click "OK".
3. From Button Setting pull down menus, select "Keystroke".
4. Type "Command" and "R" simultaneously on your keyboard.
5. Click "OK" and close the window.

Virtual PC

1. Go to the "Application" Pop-up menu and select "New".
2. Look for the Virtual PC folder and select the Virtual PC file. Click "OK".
3. From the "Button Setting" pull down menus select "Modifier".
4. From the bottom of the Macally USB Manager control menu click the "Shift" and "Mouse click" buttons.
5. Click "OK" and close the window.

Adobe Photoshop

1. Go to the "Application" Pop-up menu and select "New".
2. Look for the Adobe PhotoShop folder and select the Adobe PhotoShop file. Click "OK".
3. From the "Button Setting" pull down menu select "Modifier".
4. From the bottom of the Macally USB Manager control menu, click "Control" and "Mouse click" button.
5. Click "OK" and close the window.

FAQ (FREQUENTLY ASKED QUESTIONS)

1. Why is it that every time I want to change the button setting an alert box is displayed and warns me that it is illegal configuration?

You must reserve at least one button as a single click button. All you need to do is to first change the other button to a single and then change the button in question to its new setting.

2. Why is my iMousePro is moving so fast or so slow?

Adjust the mouse tracking speed only from the window shown in Figure 1. Don't open the original mouse control panel. If you do, you'll need to adjust that tracking speed to correspond to the one selected in Figure 1. To make it simple, disable the original mouse control panel that came with your system.

3. I can't use this mouse with any DOS games.

Although you can play DOS games with PC emulation software the iMousepro will not always respond. The rule of thumb is if you can not make the Apple ADB mouse work, the iMousePro will not work in the same situation.

4. The right button is no longer programmable, it works like a single click button.

That's because either you didn't restart the computer after the installation or you hot plugged the iMousePro. In this case, simply launch the Macally USB Manager and close it, all the previous settings will come back.